



HARE
Krishna
HEIGHTS

RAJ-RERA-APP-P-2023-9426



Urban Real Estate Group's

Homes designed
for a **Luxurious Life**

ULTRA LUXURIOUS
3 BHK

Starting From
48 LACS



Phone: +91 75686 59047

MAIN ATTRACTIONS OF THE PROJECT



DG Set For Power Back Up



Intercom Facility



Society Temple



Solar Pannel Backup



Kids Play Area



Open Zym



Lift Facility



Multipurpose Hall



Rooftop Garden



Reserved Car Parking



CCTV Camera



Security Guard Room



Yoga Deck



Open Terrace for Party



Sitting Area



24x7 Water Supply

FURNISHED & SEMI FURNISHED FLAT DETAILS

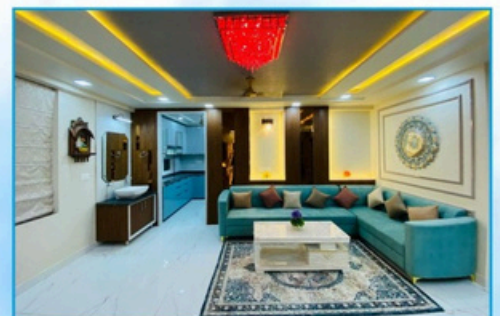
Furnished Details :

- 3 Double Beds with Boxes & Mattresses with Bedsheets & Pillows.
- L Shape Sofa Set with Center Table.
- 4/6 Seater Modern Dining Table.
- Exhaust & Geyser in all Bathrooms.
- TV Cabinets in all Rooms & Hall.
- Modular Kitchen with RO & Chimney.
- Wardrobes in all 3 Rooms with Dressing Table.
- Luxury Wood Work in Flats.
- Decorative Lights & Paintings.
- Crockery Cabinet and other wooden drawers & Fixtures all over in flats.
- Provision of Invertor & Dish TV Wiring etc.
- Curtains with Curtain rods.
- False Ceiling.

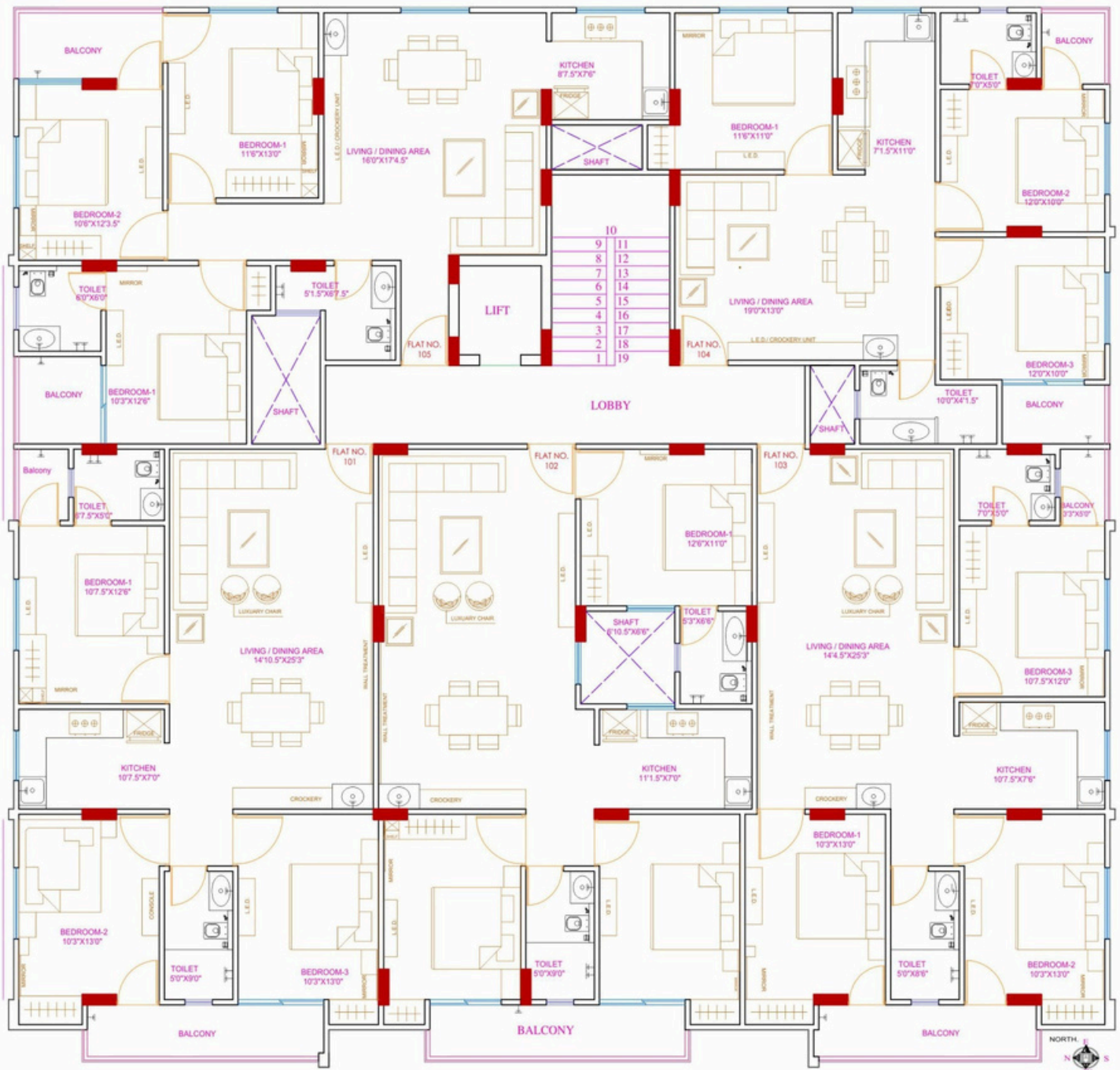
Semi Furnished Details :

- Moduler Kitchen
- TV Cabinet in Hall
- Wardrobes in 2 Rooms
- False Ceiling
- Branded Electric & Sanitary Fittings
- Lights & Fans
- Wall Papers etc.

ACTUAL IMAGES

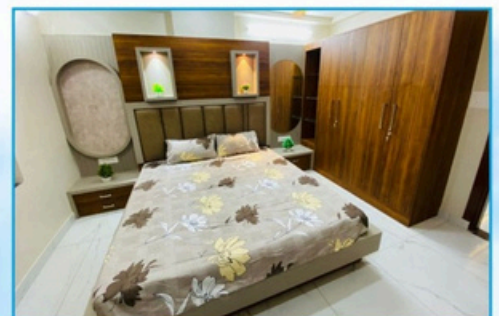
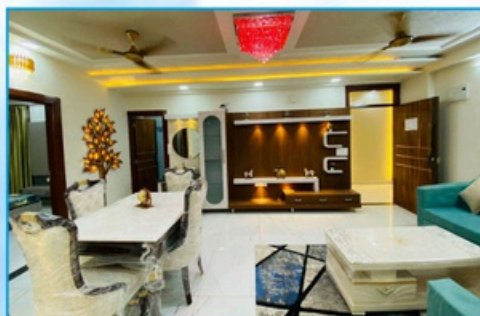


FLOOR PLAN



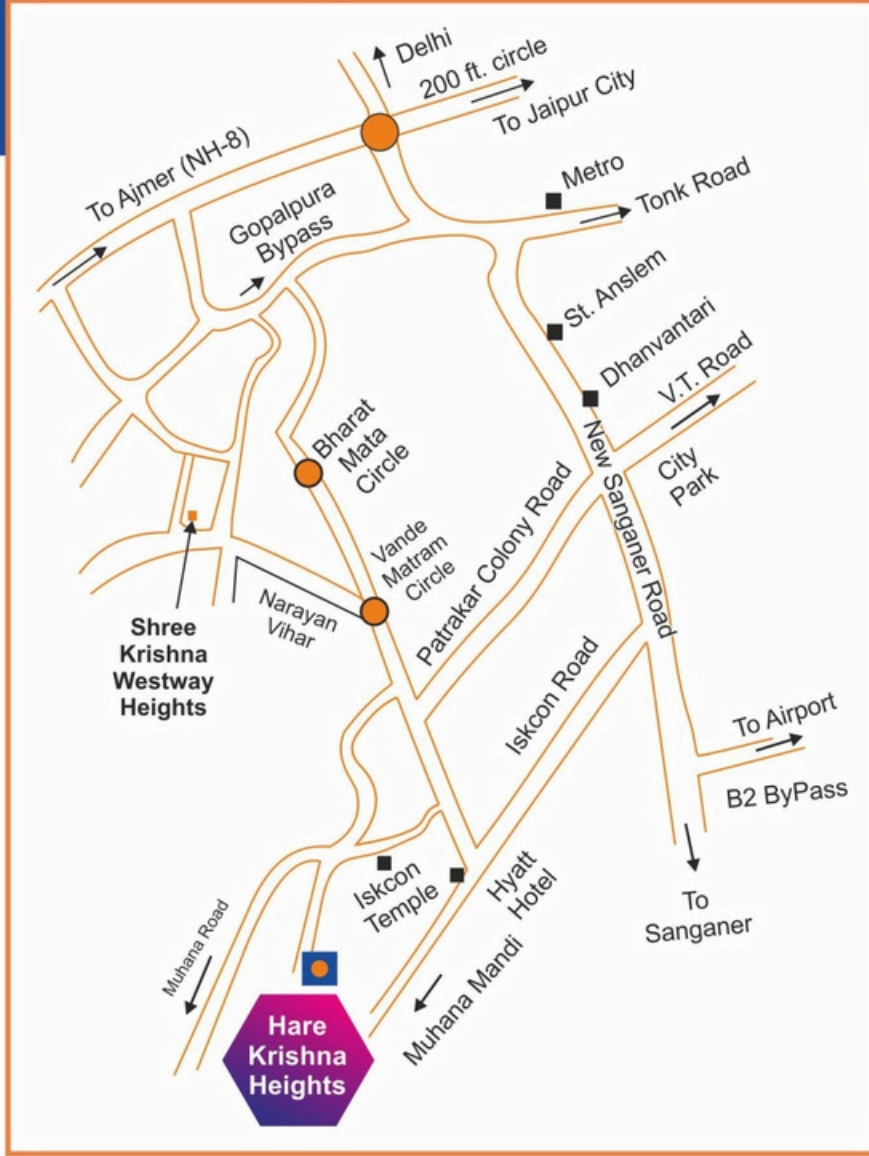
AREA IN SQ.FT	FLAT NO.	101 3BHK	102 3BHK	103 3BHK	104 3BHK	105 3BHK	BUILDING AT PLOT NO . 18,19,19A, HARE KRISHNA VILLAGE-II, JAIPUR GROUND FLOOR AREA PLAN
SALE AREA		= 1529.42	= 1496.54	= 1505.85	= 1237.85	= 1461.21	
BUILTUP AREA		= 1132.91	= 1108.55	= 1115.45	= 916.93	= 1082.38	

ACTUAL IMAGES



Location Map

(map not to be scale)



LIVE IN THE HEART OF URBAN CONVENIENCE

- Iskon Temple 1 km
- Hyatt Regency Hotel 2 km
- Gulab Garh Resort 3 km
- City Park Mansarovar 3.5 km
- Dhanwantari Hospital 4 km
- St. Anselm School 4.5 km
- Muhana Mandi 5 km
- Fun Kingdom Park 6.5 km
- Mansarovar Metro Station 7 km
- Durgapura Railway Station 7.5 km
- Jaipur Airport 9 km
- Jaipur Railway Station 15 km

मुख्य आकर्षण

- ❖ इस्कॉन मंदिर ❖ हॉस्पिटल
- ❖ हयात होटल ❖ स्कूल
- ❖ 4-5 कॉलोनी पार्क
- ❖ 3-4 शॉपिंग मार्ट
- ❖ 5-6 स्पोर्ट्स एकेडमी
- ❖ कॉलेज इत्यादि



Site Address :

Plot No. 18,19,19A,

Hare Krishna Nagar, Patrakar Colony,
Mansarovar Extn., Jaipur



Urban Real Estate Group's

Address: Plot No. 135, Modi Nagar, Ajmer Road Jaipur

Phone: +91 75686 59047