

Marketed by



Urban Real
Estate Group's



RERA No.: RAJ/P/2023/2892

Project by



Sunrise Heights

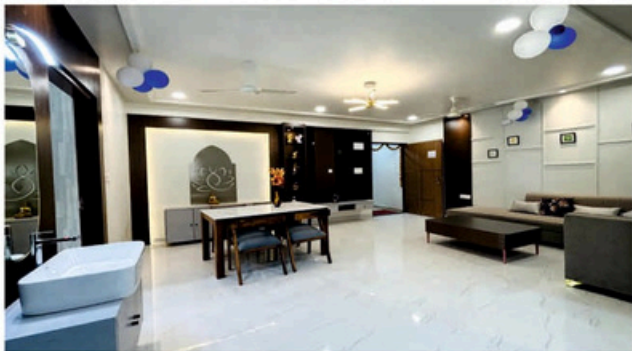
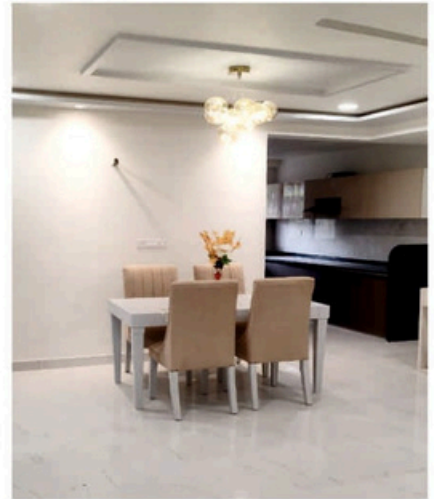
महल जैसा घर... खुशियाँ अब नये पते पर...

Phone: +91 75686 59047

**ULTRA
LUXURIOUS
3 BHK
BIG SIZE
FLATS**



ACTUAL IMAGES





FLAT NO.
101

BUILD-UP AREA
1161.12 SQFT.

TYPE
3BHK

S. BUILD-UP AREA
1567.51 SQFT.



FLAT NO.
102

BUILD-UP AREA
1200.06 SQFT.

TYPE
3BHK

S. BUILD-UP AREA
1620.08 SQFT.



FLAT NO.

103

BUILD-UP AREA

1123.13 SQFT.

TYPE

3BHK

S. BUILD-UP AREA

1516.22 SQFT.



FLAT NO.

104

BUILD-UP AREA

1046.96 SQFT.

TYPE

3BHK

S. BUILD-UP AREA

1413.39 SQFT.



FLAT NO.

105

BUILD-UP AREA

1135.28 SQFT.

TYPE

3BHK

S. BUILD-UP AREA

1532.62 SQFT.



FLAT NO.

106

BUILD-UP AREA

1287.41 SQFT.

TYPE

3BHK

S. BUILD-UP AREA

1738.00 SQFT.

WORLD CLASS AMENITIES OF THE PROJECT



Multipurpose Hall



Society Office



Security Guard Room



CCTV Camera



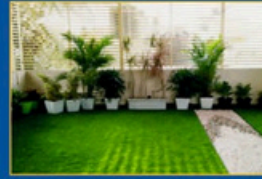
DG Set For Power Back Up



Kids Play Area



Terrace Gym



Rooftop Garden



Sitting Area



Society Temple



Reserved Car Parking



Double Lift



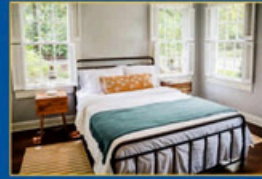
24x7 Water Supply



EV Charging



App Based Security



Guest Room

मुख्य आकर्षण

- ❖ नया बस स्टैण्ड
- ❖ कॉलोनी मस्जिद
- ❖ लोकल ट्रांसपोर्ट
- ❖ हॉस्पिटल
- ❖ शॉपिंग मार्ट
- ❖ स्कूल
- ❖ होटल हाईवे किंग
- ❖ गीतांजलि मेडिकल हब
- ❖ कॉलेज इत्यादि

LIVE IN THE HEART OF URBAN CONVENIENCE

- Kamla Nehru Underpass 0.5 km
- New Bus Stand 1 km
- Hotel Highway King 1 km
- Rawat PG College 1 km
- Geetanjali Medical Hub 2 km
- GDC Club 2 km
- Step by Step School 3.5 km
- Shalby Hospital 3.5 km
- Element Mall 3.5 km
- Mansarovar Metro Station 4 km
- Jaipur Railway Station 9 km
- Jaipur Airport 14 km

NEARBY ATTRACTIONS



MANSAROVAR METRO STATION



GEE TANJALI MEDICAL HUB



COLLEGES



NEW BUS STAND



SCHOOLS



HOTELS



SHOPPING MALLS

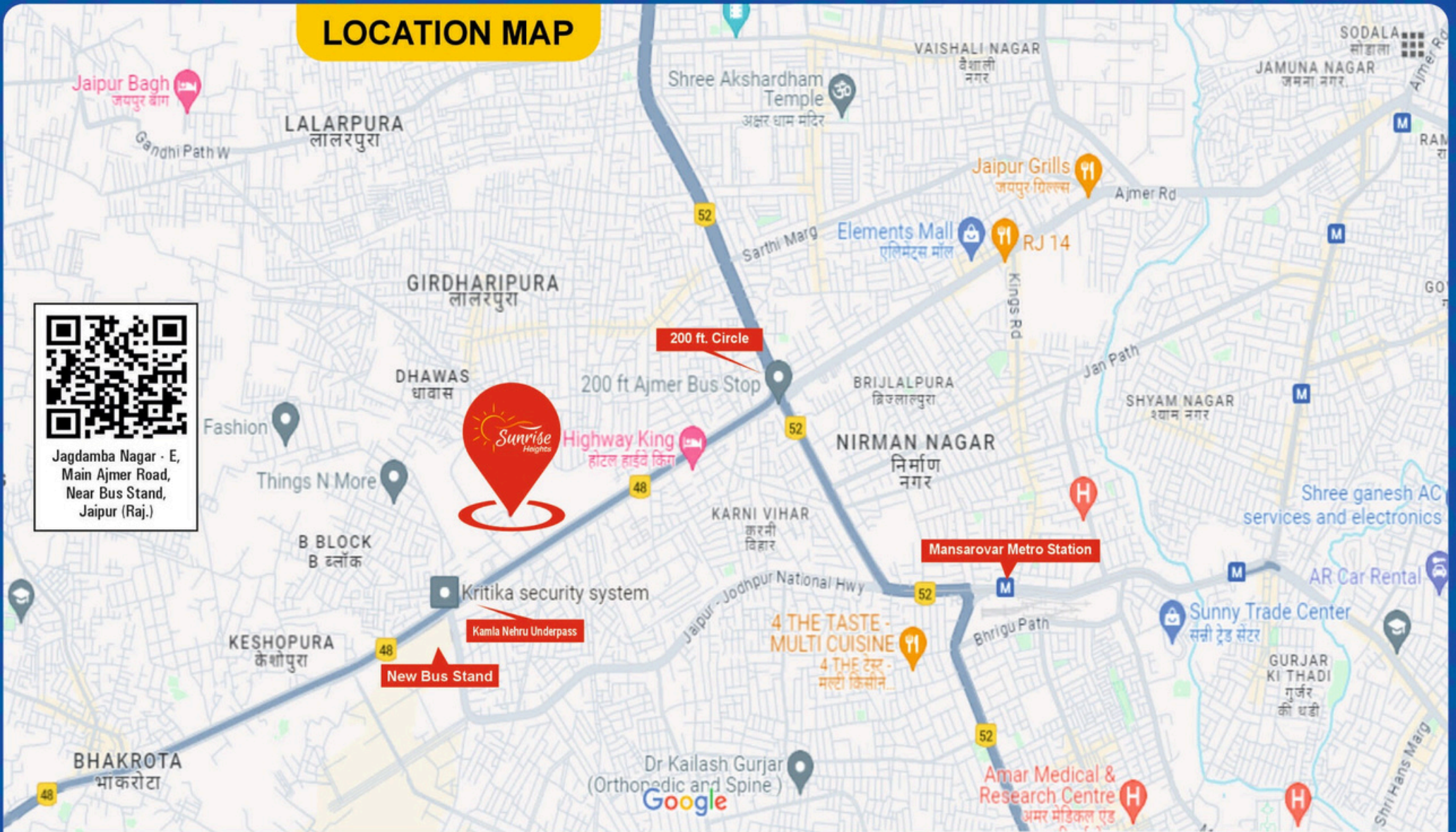


LOCAL TRANSPORT



CLUB & RESORTS

LOCATION MAP



Jagdamba Nagar - E,
Main Ajmer Road,
Near Bus Stand,
Jaipur (Raj.)

Disclaimer : This Brochure is a presentation and not a legal document. All drawings, amenities, facilities, 3d views/elevations are subject to change as per the respective authorities/developers. Images, 3d views and elevations shown above are on artistic conceptualization/impression and do not purpose to replicate the exact products.



Urban Real Estate Group's

Address: Plot No. 135, Modi Nagar, Ajmer Road Jaipur

Phone: +91 75686 59047