



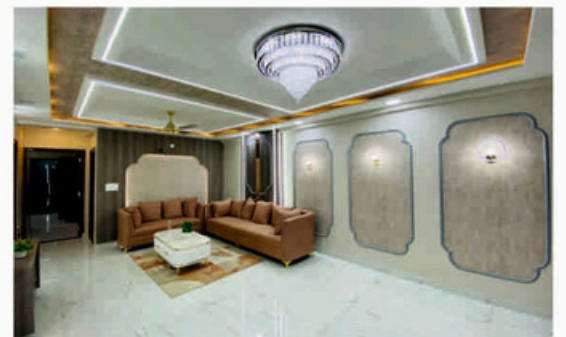
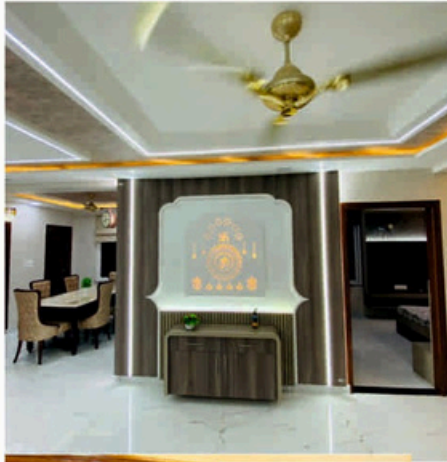
ULTRA LUXURIOUS 4 BHK FLATS

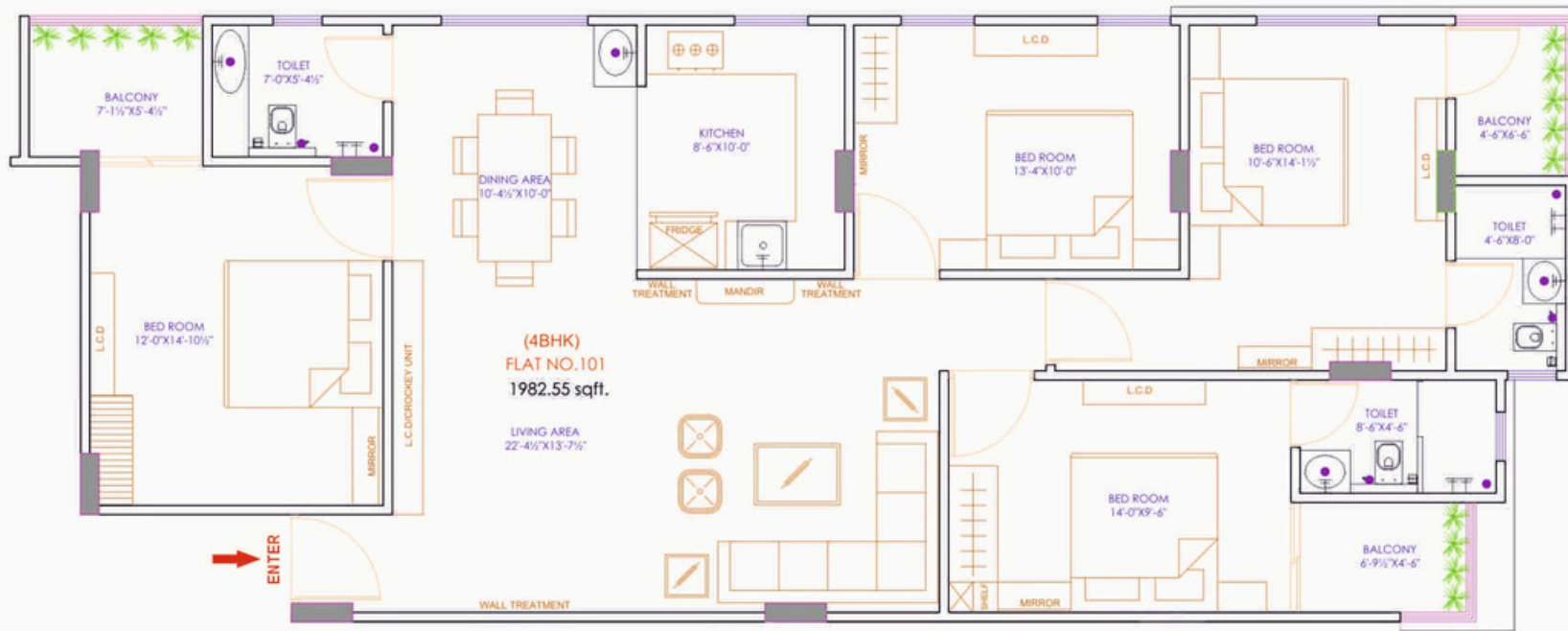


MAKE THE BEST DECISION
OF YOUR LIFE

ULTRA
LUXURIOUS
4 BHK
FLATS







FLAT NO.

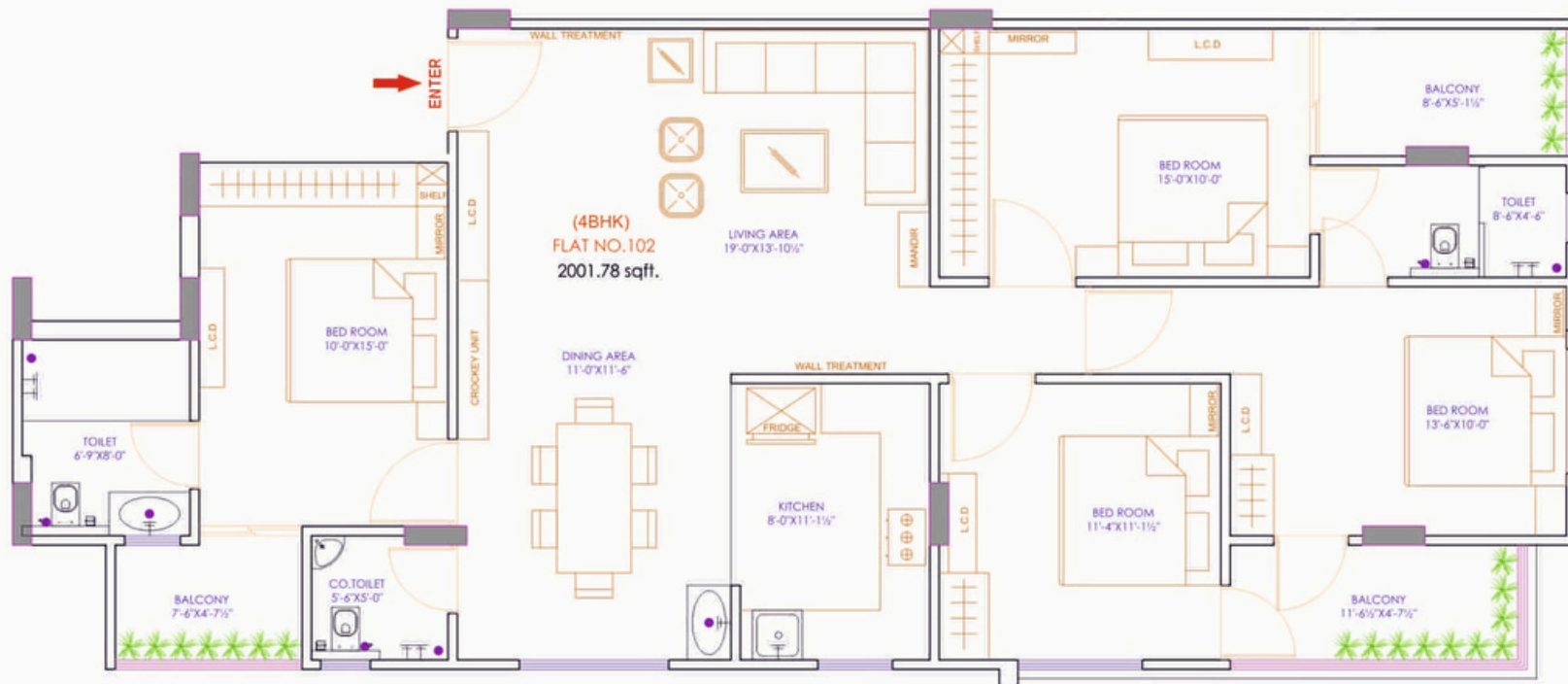
101

TYPE

4BHK

S. BUILD-UP AREA

1982.55 SQFT.



FLAT NO.

102

TYPE

4BHK

S. BUILD-UP AREA

2001.78 SQFT.

FLAT NO.

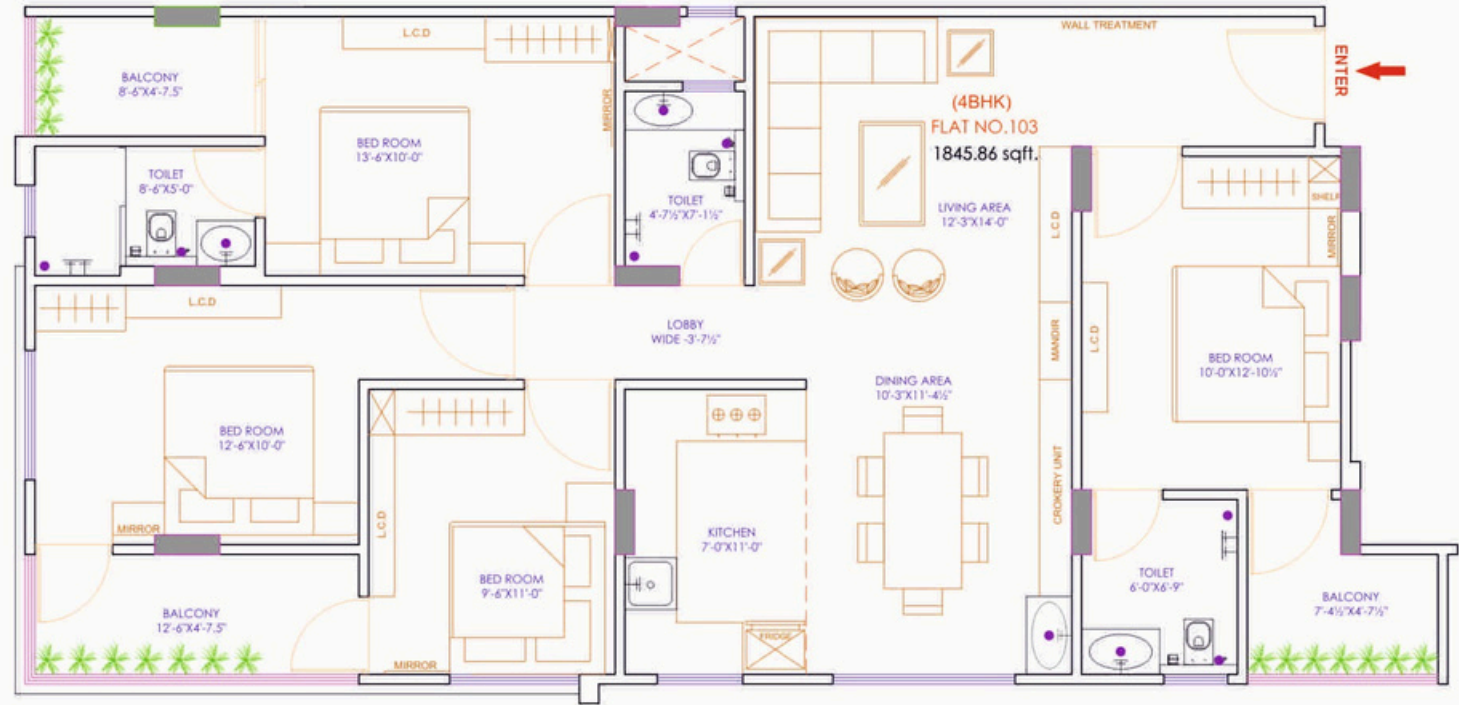
103

TYPE

4BHK

S. BUILD-UP AREA

1845.86 SQFT.



FLAT NO.

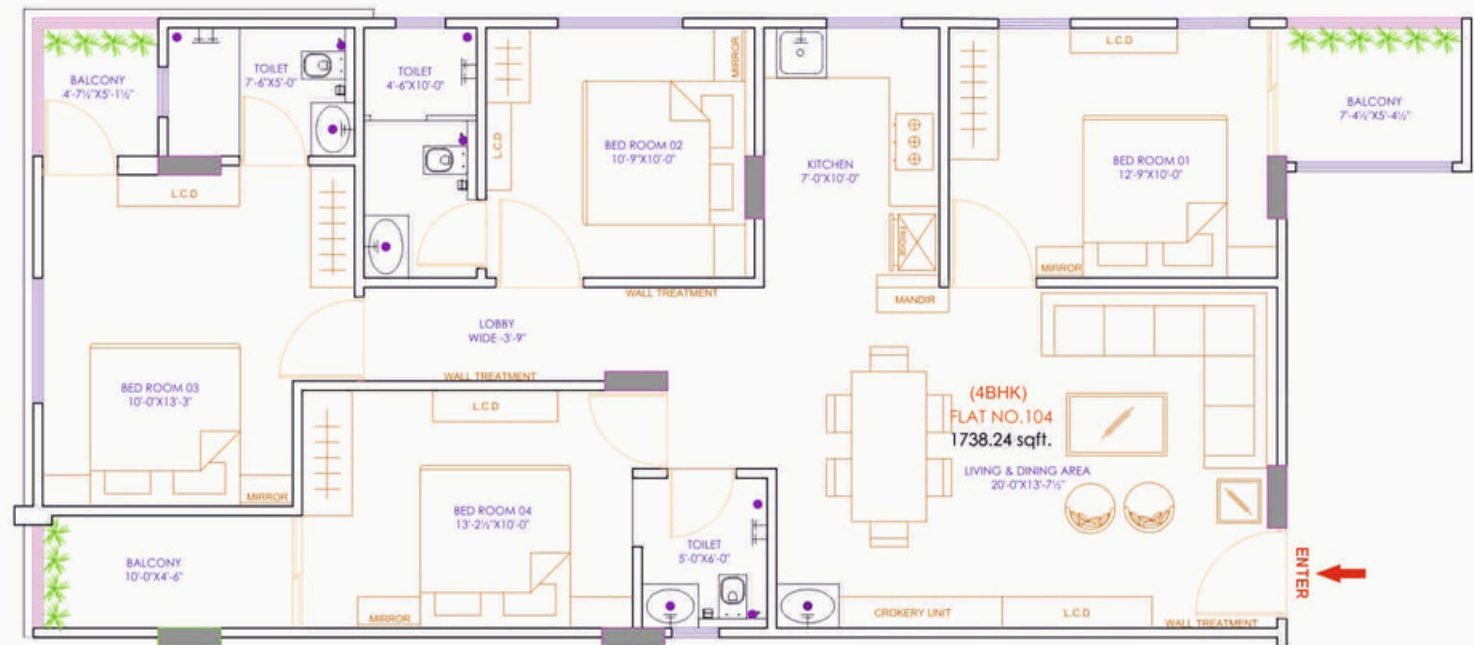
104

TYPE

4BHK

S. BUILD-UP AREA

1738.24 SQFT.





NO.	FLAT NO.	BUILT UP AREA (SQ.FT)	SUPER BUILT UP AREA (SQ.FT.)
01	FLAT NO.-101 (4BHK)	1468.56 sqft.	1982.55 sqft.
02	FLAT NO.-102 (4BHK)	1482.80 sqft.	2001.78 sqft.
03	FLAT NO.-103 (4BHK)	1367.31 sqft.	1845.86 sqft.
04	FLAT NO.-104 (4BHK)	1287.59 sqft.	1738.24 sqft.

LIVE IN THE HEART OF URBAN CONVENIENCE

Within 1 kilometer:

- Shiv Temple (300 m)
- Diamond Tower (500 m)
- Sodhani Sweets (700 m)
- Queens Road (700 m)

Between 1 Kilometer and 1.5 kilometers:

- Nirman Nagar (1 km)
- Jain Temple (1.1 km)
- Kanha Restaurant (1.4 km)
- Element Mall (1.4 km)
- Shyam Nagar (1.5 km)
- St. Xavier's Public School (1.5 km)

Between 1.5 kilometers and 3 kilometers:

- Shyam Nagar Metro Station (1.8 km)
- Asopa Hospital (2 km)
- Sodala Metro Station (2 km)
- Jayshree Periwal International School (2.5 km)
- Mansarovar Metro Station (2.5 km)

Above 3 kilometers:

- Shalby Hospital (3.5 km)
- Railway Station (4.8 km)
- Ahinsa Circle (5.5 km)
- Airport (12 km)

WORLD CLASS AMENITIES OF THE PROJECT



Society Office



Security



CCTV Camera



Solar System



Fire Fighting System



Power Back Up



Kids Play Area



Gym



Rooftop Garden



Sitting Area



Reserved Car Parking



Lift



24x7 Water Supply



Water Harvesting

मुख्य आकर्षण

- ❖ हॉस्पिटल
- ❖ कॉलोनी मंदिर
- ❖ लोकल ट्रांसपोर्ट
- ❖ कॉलेज इत्यादि
- ❖ होटल हाईवे किंग
- ❖ शॉपिंग मार्ट
- ❖ स्कूल

NEARBY ATTRACTIONS



SHYAM NAGAR METRO STATION



ELEMENTS MALL



NH-14 RESTAURANT



ARMY CANTONMENT



DIAMOND TOWER



DCM MARKET



VEGETABLE MARKET



ASOPA HOSPITAL

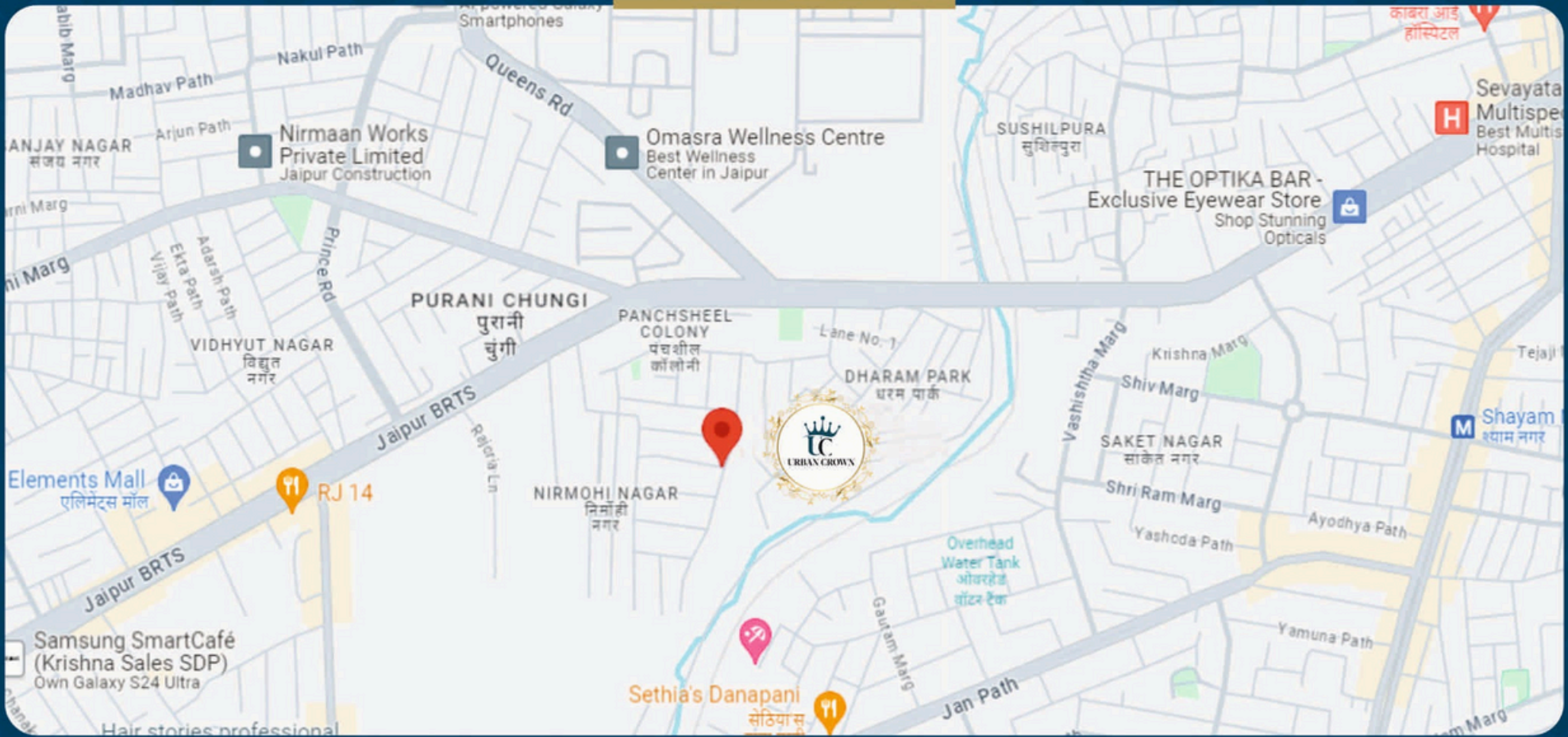


JAYSHREE PERIWAL SCHOOL



SAR OVAR PORTICO HOTEL

LOCATION MAP



URBAN CROWN @ Plot no. 134/135/136, Modi Nagar, Opp. Diamond Tower, Purani Chungi, Main Ajmer Road, Jaipur-302021 (Raj.)

Disclaimer : This Brochure is a presentation and not a legal document. All drawings, amenities, facilities, 3d views/elevations are subject to change as per the respective authorities/developers. Images, 3d views and elevations shown above are on artistic conceptualization/impression and do not purpose to replicate the exact products.



Address: Plot No. 135,
Modi Nagar
Ajmer Road Jaipur

Phone: +91 75686 59047

SCAN FOR LOCATION

